

[SUBJECT] Fall of lifeboat caused by corrosion of hanging part for floating block

Precaution Information

1. Applied model

SHS-38-079, SHS-37-062, SHS-35-054,
SHS-36-062, SHS-34-056, SHS-34-046,
SHS-33-056, SHS-32-048

2. Date of manufacture

From start of production in 1988 till up to now

3. Outline

At annual inspection, the bottom part of the floating block fell off. Overlapped connecting section decreased due to corrosion of the outer diameter of the nut and it slipped out with the bush in the boss.

4. Cause

1. Corrosion by rain and sea water
2. This floating block has construction that a bush is pushed into inside of the boss. Corroded thin nut slipped out together with the bush (outer dia 42).

5. Countermeasure

● Check the corrosion of nut and side plate

*If the material is corroded or worn out more than 10% of original size, it is recommended to renew. Evaluation is necessary for the main material excluding thickness of paint and corrosion.

*Width across flats ("a" in Chart 1), thickness of side plate.

※Refer Chart 2 for original size of the nut and the side plate. Diameter of bush and hole going through the eye bolt cannot be checked at an annual inspection, it is necessary to judge from the corroded condition of the nut and the side plate.

● Recommended interval of renewal of floating block

*Even if it is judged as 'no problem' by authorised engineer at annual inspections, considering metal fatigue and invisible corrosion, it is recommended to renew by complete unit within 15-20 years after vessel starting service (or previous renewal).

● Carry out regular maintenance

* Greasing to each shaft or pin.

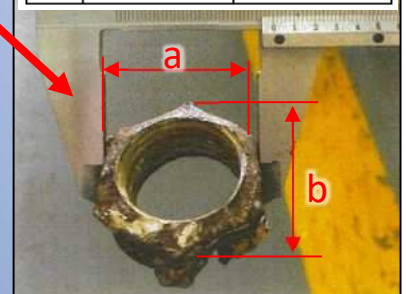
* Removal of rust and touch up painting.

(Progress of corrosion cannot be stopped even if painting is carried out on the rust.)



Chart 1

	Original	Measurement
a	49-50mm	38mm
b	55.4mm	42mm



Reference

*This reference indicates the construction of bush.
(SHS-●●-○○○)
Other models are construction with no bush. Size of nut and hole differs depending on davit model.

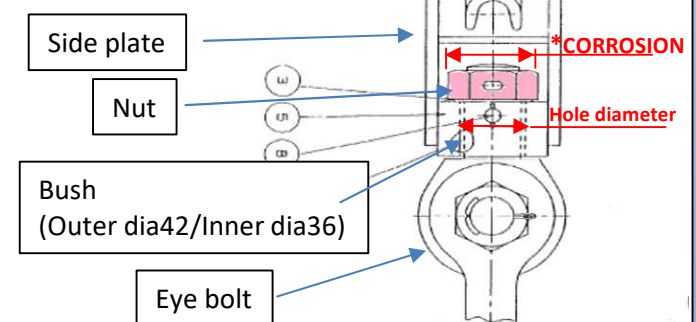


Chart 2

Davit Type	Winch type	Nut Width-across-flats	Side plate/Body Thickness
SHS-38-079	SWE-15-060/360	Max.50mm(Min.49)	10mm
SHS-37-062	SWE-10-060/360	Max.50mm(Min.49)	10mm
SHS-35-054	SWE-08-060/360	Max.50mm(Min.49)	10mm
SHS-34-056	SWE-08-070/380	Max.46mm(Min.45)	9mm
SHS-34-056C	SWE-08-070/380	Max.46mm(Min.45)	10mm
SHS-33-056PK	SWE-08-060/360	Max.50mm(Min.49)	10mm
SHS-33-052	SWE-08-060/360	Max.50mm(Min.49)	10mm
SHS-32-048	SWE-06-080/360	Max.41mm(Min.40)	10mm
SHS-32-049	SWE-06-080/360	Max.41mm(Min.40)	10mm
SHS-35-062	SWE-23-030/180	-	16mm
SHS-40-092	SWE-45-030	-	16mm

* If your model is not listed here, send us inquiry.



SEKIGAHARA SEISAKUSHO LTD.

2067 Sekigahara-cho, Fuwa-gun, Gifu-Pref, 503-1593, Japan
TEL +81-584-43-1211 FAX +81-584-43-1218
URL <http://www.sekigahara.co.jp/index.html>