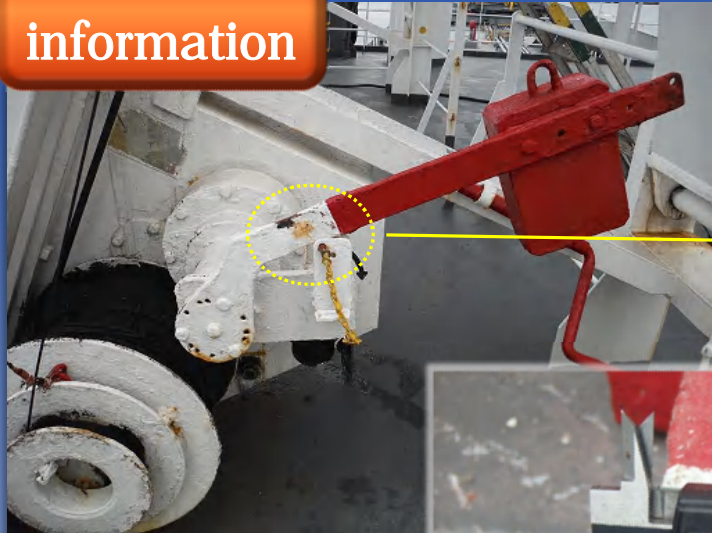


Suggestion of Maintenance for Safety and Relief For the safe use of Sekigahara Product

Precaution information

[SUBJECT] Preventing the Deformation of Brake Arm

Photo : SWE-08-070 Manufactured in 2004



1. Applied model

* All the SWE model winch

SWE-06 ~ SWE-45

2. Date of manufacture

1988 ~ 2016


3. Outline


The brake arm (brake lever) may bend due to the unstable weight balance when the brake arm is lifted (at normal launching operation or hoisting operation by winch).

In case the arm is bent, it may be stuck to the lever guide and would not go back to suitable position for braking.

- * Boat will keep lowering to the water without stopping. Davit may be damaged heavily if it is during sailing.
- * Boat cannot be recovered to the stowing position.

4. Maintenance and Countermeasure

 In case the rust is found, remove it and carry out touch up painting.

 If the arm is worn out and becomes thin, repair work is necessary. Do not thicken the lever which may interfere with the lever guide.

<Criteria>

If the thickness of the arm become less than 70% (8.4mm), urgent replacement of the lever is mandatory.



SEKIGAHARA SEISAKUSHO LTD.

2067 Sekigahara-cho, Fuwa-gun, Gifu-Pref, 503-1593, Japan
TEL +81-584-43-1211 FAX +81-584-43-1218
URL <http://www.sekigahara.co.jp/index.html>



Lever is interfering with the guide because reinforcing material is too thick.

