

Service News

Suggestion of Maintenance
for Safety and Relief
For the safe use of Sekigahara Product

SSN-003

Issued: Apr 1, 2016

Is the CAM CLUTCH on your vessel ready for safe use?

CAM CLUTCH is the most important parts and the only brake system for the boat davit & winch. If the CAM CLUTCH does not work properly, safe launching of lifeboat is not possible without function of brake.

1. Applied model Combination of davit and winch type

SWE-06-080/360 (SHS-32-048,SHS-34-046)
SWE-08-060/360 (SHS-33-056,SHS-33-052)
SWE-08-070/380 (SHS-34-056)
SWE-09-070/380 (SHS-36-062)
SWE-05-180 (SJS-36-***,SJS-40-***)
SWE-06-180 (SJS37***)

2. Date of manufacture

1995~up to now

3. Outline This may happen

- Case 1 : When the clamp for the davit arm was released at the beginning of launching test, suddenly, the davit arm swang out without winch operation.
- Case 2 : Even after the launching test and the brake lever was set at normal position, the boat kept lowering and reached on the sea surface.
- Case 3 : Although the lifeboat was hoisted up by winch motor, the boat started lowering again and could not be recovered to stowing position.

4. Cause

Malfunction of CAM CLUTCH is due to uneven wear caused by the short of oil, rust or corrosion by intrusion of water or foreign substance.

6. Prevention of accident

- ✂ We recommend to protect CAM CLUTCH from dust or sea water and other things by installing the rubber cap for above mentioned models.
- ✂ We consider that the replacing interval is 5 years for CAM CLUTCH. Please replace if it has been installed for more than 5 years.
- ⊘ Never put or spray water directly to this section.
- ⊘ Never dismantle and overhaul the CAM CLUTCH.



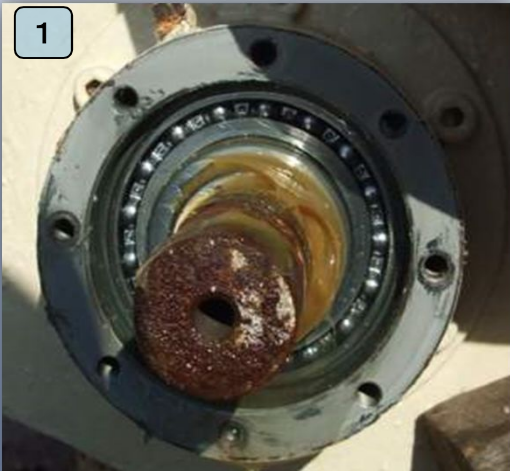
Rubber cap installed on cam clutch.



SEKIGAHARA SEISAKUSHO LTD.

2067 Sekigahara-cho, Fuwa-gun, Gifu-Pref, 503-1593, Japan
TEL +81-584-43-1211 FAX +81-584-43-1218
URL <http://www.sekigahara.co.jp/index.html>

Criterion (Sample of Judgement)



<Normal condition>

- 1) There is no rust on the surface of the bearing.
- 2) There is no dirt in the oil in the cam clutch.
- 3) There is no intrusion of grease.
(Oil bath type)

Judgement: Good condition



<Limit of use>

- 1) The surface of the bearing rusted.
- 2) Oil in the cam clutch is dirty

Judgement: Need to be replaced a.s.a.p.



<Impossible to use>

- 1) The surface of the bearing rusted remarkably.
- 2) Oil in the cam clutch is empty.

Judgement: Do not use



<Maintenance is necessary>

- 1) There is no rust on the surface of the bearing.
- 2) A large amount of grease is entering into the clutch.

(Treatment)

Clean with cleaning oil to remove grease in the clutch.